



## Metal Fitting

Metal Conduit & Fitting  
11/2012


**Electrical Metallic Tubing (EMT) Conduit**

Product Code	O.D. (inch)	Estimate O.D. with uPVC Conduit (mm.)	Length (M)	Packing	@Price / Ea (USD)
EMT102-02/22	1/2"	20	3.00	1/10	\$ 3.50
EMT304-03/22	3/4"	25	3.00	1/10	\$ 5.00
EMT100-05/22	1"	32	3.00	1/10	\$ 8.00
EMT114-08/72	1-1/4"	40	3.00	1/5	\$ 13.00
EMT112-07/40	1-1/2"	50	3.00	1/3	\$ 15.25
EMT200-12/72	2"	-	3.00	1/3	\$ 20.25


**Intermediate Metal Conduit (IMC) Conduit**

Product Code	O.D. (mm.)	Estimate O.D. with Steel Conduit Size	Length (M)	Packing	@Price / Ea (USD)
IMC102-04/70	1/2"	20	3.00	1/10	\$ 7.50
IMC304-06/25	3/4"	25	3.00	1/10	\$ 10.50
IMC100-09/70	1"	32	3.00	1/10	\$ 15.00
IMC114-12/00	1-1/4"	40	3.00	1/5	\$ 18.50
IMC112-14/70	1-1/2"	50	3.00	1/3	\$ 22.50
IMC200-18/25	2"	-	3.00	1/3	\$ 25.50
IMC212-20/70	2-1/2"	-	3.00	1/3	\$ 35.50
IMC300-32/00	3"	-	3.00	1/2	\$ 57.00
IMC312-39/70	3-1/2"	-	3.00	1/2	\$ 70.75
IMC400-45/25	4"	-	3.00	1/1	\$ 81.00
IMC500-51/70	5"	-	3.00	1/1	\$ 93.00


**EMT Bender**

Product Code	Size for Bending	@Price / Ea (USD)
EBD01-16/15	EMT 1/2"	\$ 27.50
EBD02-26/60	EMT 3/4" or IMC 1/2"	\$ 45.00
EBD03-55/00	EMT 1" or IMC 3/4"	\$ 96.00


**Hickey**

Product Code	Size for Bending	@Price / Ea (USD)
IHK01-34/00	IMC 1/2" or IMC 3/4"	\$ 56.65
IHK02-74/00	IMC 1" or EMT 1-1/4"	\$ 123.00


**Coupling for EMT Conduit**

Product Code	Size for EMT	@Price / Ea (USD)
ECP102-00/12	1/2"	\$ 0.30
ECP304-00/16	3/4"	\$ 0.45
ECP100-00/27	1"	\$ 0.55
ECP114-00/64	1-1/4"	\$ 0.75
ECP112-00/75	1-1/2"	\$ 1.40
ECP200-01/20	2"	\$ 1.80


**Rain Type Coupling for EMT Conduit**

Product Code	Size for EMT	@Price / Ea (USD)
ERP102-00/50	1/2"	\$ 0.85
ERP304-00/70	3/4"	\$ 1.20
ERP100-01/00	1"	\$ 1.80
ERP114-01/60	1-1/4"	\$ 2.65
ERP112-02/90	1-1/2"	\$ 4.80
ERP200-03/70	2"	\$ 6.15


**Connector for EMT Conduit**

Product Code	Size for EMT	@Price / Ea (USD)
ECN102-00/12	1/2"	\$ 0.25
ECN304-00/16	3/4"	\$ 0.40
ECN100-00/27	1"	\$ 0.50
ECN114-00/64	1-1/4"	\$ 0.75
ECN112-00/75	1-1/2"	\$ 1.00
ECN200-01/20	2"	\$ 1.80


**Rain Type Connector for EMT Conduit**

Product Code	Size for EMT	@Price / Ea (USD)
ERN102-00/27	1/2"	\$ 0.60
ERN304-00/38	3/4"	\$ 0.85
ERN100-00/60	1"	\$ 1.35
ERN114-01/60	1-1/4"	\$ 2.53
ERN112-02/90	1-1/2"	\$ 4.00
ERN200-03/70	2"	\$ 5.65


**Bushings**

Product Code	Size	@Price / Ea (USD)
ZBH102-00/06	1/2"	\$ 0.13
ZBH304-00/08	3/4"	\$ 0.16
ZBH100-00/15	1"	\$ 0.30
ZBH114-00/23	1-1/4"	\$ 0.45
ZBH112-00/30	1-1/2"	\$ 0.60
ZBH200-00/45	2"	\$ 0.90
ZBH212-00/75	2-1/2"	\$ 1.50
ZBH300-00/95	3"	\$ 2.00
ZBH312-02/15	3-1/2"	\$ 4.30
ZBH400-02/30	4"	\$ 4.65


**Locknuts**

Product Code	Size	@Price / Ea (USD)
ZLN102-00/12	1/2"	\$ 0.22
ZLN304-00/14	3/4"	\$ 0.25
ZLN100-00/17	1"	\$ 0.30
ZLN114-00/24	1-1/4"	\$ 0.45
ZLN112-00/32	1-1/2"	\$ 0.57
ZLN200-00/47	2"	\$ 0.73
ZLN212-01/04	2-1/2"	\$ 1.80
ZLN300-01/32	3"	\$ 2.26
ZLN312-01/97	3-1/2"	\$ 3.30
ZLN400-02/12	4"	\$ 3.65



**Flexible Conduit**

Product Code	Size	Meter/Roll	@Price / Roll (USD)
FXC102-08/50	1/2"	50 M/Roll	\$ 16.65
FXC304-11/50	3/4"	50 M/Roll	\$ 25.00
FXC100-12/50	1"	30 M/Roll	\$ 25.00
FXC114-10/00	1-1/4"	15 M/Roll	\$ 17.50
FXC112-14/00	1-1/2"	15 M/Roll	\$ 25.00
FXC200-24/00	2"	15 M/Roll	\$ 42.50
FXC212-26/00	2-1/2"	10 M/Roll	\$ 48.00
FXC300-32/00	3"	10 M/Roll	\$ 58.00
FXC400-50/00	4"	10 M/Roll	\$ 100.00



**Liquid Tight Flexible Conduit**

Product Code	Size	Meter/Roll	@Price / Roll (USD)
LTF102-062/0	1/2"	60 M/Roll	\$ 150.00
LTF304-040/0	3/4"	30 M/Roll	\$ 100.00
LTF100-067/0	1"	30 M/Roll	\$ 165
LTF114-076/0	1-1/4"	15 M/Roll	\$ 136.65
LTF112-100/0	1-1/2"	15 M/Roll	\$ 183.00
LTF200-126/0	2"	15 M/Roll	\$ 230.00
LTF212-127/0	2-1/2"	7.5 M/Roll	\$ 230.00
LTF300-190/0	3"	7.5 M/Roll	\$ 345.00
LTF400-252/0	4"	7.5 M/Roll	\$ 458.00



**Liquid Tight Connector for Flexible Conduit**

Product Code	Size	@Price / Roll (USD)
LFC102-00/56	1/2"	\$ 1.35
LFC304-00/75	3/4"	\$ 1.80
LFC100-01/40	1"	\$ 3.00
LFC114-10/00	1-1/4"	\$ 17.50
LFC112-14/00	1-1/2"	\$ 25.00
LFC200-24/00	2"	\$ 42.50
LFC212-26/00	2-1/2"	\$ 48.00
LFC300-32/00	3"	\$ 58.00
LFC400-50/00	4"	\$ 100.00



**Flexible Connectors**

Product Code	Size	@Price / Roll (USD)
FXC102-00/25	1/2"	\$ 0.40
FXC304-00/45	3/4"	\$ 0.80
FXC100-00/70	1"	\$ 1.20
FXC114-01/45	1-1/4"	\$ 2.65
FXC112-02/00	1-1/2"	\$ 4.00
FXC200-03/00	2"	\$ 5.00
FXC300-06/00	3"	\$ 10.65
FXC400-11/00	4"	\$ 20.00


**IMC Coupling (for IMC Conduit)**

Product Code	Size	@Price / Ea (USD)
ICC102-00/45	1/2"	\$ 0.80
ICC304-00/50	3/4"	\$ 1.00
ICC100-00/65	1"	\$ 1.30
ICC114-01/15	1-1/4"	\$ 2.30
ICC112-01/30	1-1/2"	\$ 2.65
ICC200-01/90	2"	\$ 3.65
ICC212-04/30	2-1/2"	\$ 8.30
ICC300-05/30	3"	\$ 9.65
ICC312-06/30	3-1/2"	\$ 13.30
ICC400-07/30	4"	\$ 14.65


**Straps for EMT Conduit**

Product Code	Size	@Price / Ea (USD)
STE102-00/03	1/2"	\$ 0.05
STE304-00/04	3/4"	\$ 0.06
STE100-00/05	1"	\$ 0.09
STE114-00/09	1-1/4"	\$ 0.12
STE112-00/14	1-1/2"	\$ 0.15
STE200-00/17	2"	\$ 0.20

**Straps for IMC Conduit**

Product Code	Size	@Price / Ea (USD)
STI102-00/03	1/2"	\$ 0.05
STI304-00/04	3/4"	\$ 0.06
STI100-00/05	1"	\$ 0.09
STI114-00/09	1-1/4"	\$ 0.12
STI112-00/14	1-1/2"	\$ 0.20
STI200-00/17	2"	\$ 0.30
STI300-00/40	3"	\$ 0.70
STI004-00/55	4"	\$ 0.95


**C-Channels**

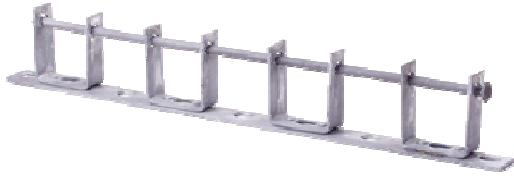
Product Code	Size	@Price / Ea (USD)
CCS102-01/50	25 x 40 x 1200	\$ 3.25
CCS304-04/50	40 x 40 x 1200	\$ 7.65


**Clamps for EMT Conduit**

Product Code	Size	@Price / Ea (USD)
CPE102-00/10	1/2"	\$ 0.30
CPE304-00/11	3/4"	\$ 0.35
CPE100-00/12	1"	\$ 0.40
CPE114-00/33	1-1/4"	\$ 0.45
CPE112-00/36	1-1/2"	\$ 0.60
CPE200-00/39	2"	\$ 0.65

**Clamps for IMC Conduit**

Product Code	Size	@Price / Ea (USD)
CPI102-00/20	1/2"	\$ 0.30
CPI304-00/22	3/4"	\$ 0.35
CPI100-00/24	1"	\$ 0.40
CPI114-00/33	1-1/4"	\$ 0.45
CPI112-00/36	1-1/2"	\$ 0.60
CPI200-00/39	2"	\$ 0.65
CPI212-00/45	2-1/2"	\$ 0.80
CPI300-00/55	3"	\$ 1.00
CPI312-00/75	3-1/2"	\$ 1.45
CPI400-00/95	4"	\$ 1.65



**Secondary Racks – Hot Dip Galvanized**

Product Code	Size	@Price / Ea (USD)
SDR501-02/75	5 mm x 1 Channel	\$ 5.00
SDR503-06/75	5 mm x 3 Channel	\$ 12.00
SDR505-09/75	5 mm x 5 Channel	\$ 19.00
SDR507-12/75	5 mm x 7 Channel	\$ 23.00



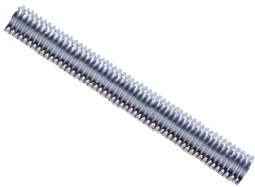
**Spool Insulator**

Product Code	Size	@Price / Ea (USD)
SLR001-00/70	Standard	\$ 1.20



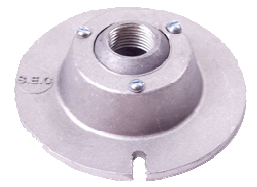
**Aluminum Tie Wire 4 mm**

Product Code	Size	@Price / Ea (USD)
ATW001-07/00	25 M/Roll	\$ 10.00



**Stud Thread Rods (White Zinc Coat)**

Product Code	Size	@Price / Ea (USD)
STR308-00/70	3/8" x 1 M (M10)	\$ 2.50
STR102-01/50	1/2" x 1 M (M14)	\$ 3.50



**Ball Flange**

Product Code	Size	@Price / Ea (USD)
BFE102-01/00	1/2"	\$ 2.50
BFE304-01/00	3/4"	\$ 2.50



**Service Entrance Caps (Clamp Type)**

Product Code	Size	@Price / Ea (USD)
SCC102-01/00	1/2"	\$ 1.35
SCC304-01/50	3/4"	\$ 1.90
SCC100-01/75	1"	\$ 2.35
SCC114-02/25	1-1/4"	\$ 3.00
SCC112-02/75	1-1/2"	\$ 3.65
SCC200-04/75	2"	\$ 6.35



**Outlet Boxes for Ball Flange**

Product Code	Size	@Price / Ea (USD)
OBF121-02/00	1/2" – 1 WAY	\$ 4.00
OBF122-02/00	1/2" – 2 WAY	\$ 4.00
OBF123-02/00	1/2" – 3 WAY	\$ 4.00
OBF124-02/00	1/2" – 4 WAY	\$ 4.00
OBF341-02/00	3/4" – 1 WAY	\$ 4.00
OBF342-02/00	3/4" – 2 WAY	\$ 4.00
OBF343-02/00	3/4" – 3 WAY	\$ 4.00
OBF344-02/00	3/4" – 4 WAY	\$ 4.00



**Handy Boxes 2"x4"**

Product Code	Deep Size	Hole	@Price / Ea (USD)
HBC113-00/25	1-1/2" (38mm)	1/2"x 3/4"x 1/2"	\$ 0.45
HBC203-00/25	1-7/8" (48mm)	3/4"	\$ 0.45
HBC213-00/25	1-7/8" (48mm)	1/2"x 3/4"x 1/2"	\$ 0.45



**Europa Boxes**

Product Code	Hole	@Price / Ea (USD)
EPB113-00/25	1-1/2", 1/2"x 3/4"x 1/2"	\$ 0.50
EPB213-00/25	1-7/8", 1/2"x 3/4"x 1/2"	\$ 0.50



**Square Boxes 4"x4" Thin**

Product Code	Deep Size	Hole	@Price / Ea (USD)
SBC113-00/27	1-1/2" (38mm)	1/2"x 3/4"x 1/2"	\$ 0.50
SBC203-00/27	1-7/8" (48mm)	3/4"	\$ 0.50
SBC213-00/27	1-7/8" (48mm)	1/2"x 3/4"x 1/2"	\$ 0.50



**Pull Boxes (Epoxy Paint)**

Product Code	Size (WxLxD)	@Price / Ea (USD)
PBX444-00/85	4"x 4"x 4"	\$ 1.20
PBX664-01/12	6"x 6"x 4"	\$ 1.60
PBX684-01/30	6"x 8"x 4"	\$ 1.85
PBX884-01/65	8"x 8"x 4"	\$ 2.30
PBX886-02/38	8"x 8"x 6"	\$ 3.40
PBX104-03/00	10"x 10"x 4"	\$ 4.25
PBX106-03/30	10"x 10"x 6"	\$ 4.75
PBX124-03/65	12"x 12"x 4"	\$ 5.20
PBX126-04/13	12"x 12"x 6"	\$ 5.90
PBX128-05/60	12"x 12"x 8"	\$ 8.00
PBX144-06/00	14"x 14"x 4"	\$ 8.25
PBX146-06/30	14"x 14"x 6"	\$ 8.30
PBX166-06/65	16"x 16"x 6"	\$ 8.65



**Cover Lid**

Product Code	For Size	Use For	@Price / Ea (USD)
LID204-00/50	2x4"	Handy Box	\$ 0.15
LID214-00/40	2x4"	Europa Box	\$ 0.15
LID404-00/40	4x4"	Square Box	\$ 0.15

\*Example Checking Hole and Deep:



**Note:**

---

---

---

---

---

---

---

---

---

---

---

---

---

---

---

---

---

---

---

---

---

---

---

---

---

---

**Total ImEx Corporation Co., Ltd.**  
118/131 Moo 7 Rama 2 Rd., Samae Dum  
Bangkhuntien, Bangkok  
Thailand 10150

**Total ImEx Engineering Co., Ltd.**  
142 Moo 5 Phutthamonthon 5 Rd.  
Omnoi, Khathumbaen, Samutsakorn  
Thailand 10150

<http://www.tieccorp.com>

**TIEC Corporation (Cambodia)**  
No. J29, St. Jewel, Sangkat Teouk Tla,  
Khan Sen Sok, Phnom Penh  
Cambodia  
Tel: +855 23 677 2929

email: [tieccorp@yahoo.com](mailto:tieccorp@yahoo.com)